

Synergy California L.P.

Renewable Energy Systems



2007 Catalog and Capabilities Booklet

Synergy



California L.P.

P.O. Box 3171 Sausalito, CA 94966 USA

TEL: (415) 290-4990 FAX: (425) 790-0921

www.synergyii.com

"It is becoming clear that the future of our electric power will come less from large coal, gas and nuclear power plants, but more from millions of micro generators and turbines, photoelectric solar panels mounted on the roof-tops of the city with wind-turbines in the countryside. Existing national power grids won't disappear. They will operate more like the Internet, as part of a complex web through which people will supply electricity, by uploading, as well as downloading it."

From: The Solar Internet www.synergyii.com/SOLARINTERNET/index.html by Reinhold Ziegler

YEAR 2007 CAPABILITY STATEMENT

Synergy California L.P. is a California Limited Partnership.

The mission of Synergy California Ltd. (SynergyCA) is to be a complete renewable energy systems manufacturer/supply company and design/engineering management firm for developing self-reliant and green architecture, commercial developments, land developments and eco-resort operations called **Eco-Estates**. With patented technology for wind and fluid turbines, solar photovoltaics, stirling engine micro-turbines, waste-treatment infrastructure and green houses, SynergyCA is preparing land and facilities for the future of distributed power generation and sustainable self-reliance.

The Synergy partnership is allied with three sister entities: the leasing entity **Enviro-Lease Inc.**, a building, energy, transportation services company (BETSCO) which provides leased energy systems, self-reliant buildings, disaster relief buildings, and hybrid-electric vehicles for commercial facilities and schools, and, **Aerotecture International** www.aerotecture.com a developer of Urban wind-turbines, and **Solartecture International**, www.solartecture.com a systems integrator for building-integrated photovoltaics, wind-turbines, pellet and natural gas powered stirling engines.

Operating with synergy these organizations not only make a profit for our investors and stakeholders, but our ethical criteria is based on having a tripple bottom line. Our work therefor produces profit, it benefits local communities, and it creates a healthy biosphere and sustainable world.

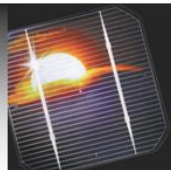
THIS TECHNOLOGY CATALOG.

The principals of **Synergy California L.P.** have been manufacturing, and deploying renewable energy systems and innovative structural designs for the last 30 years.

What is featured in this catalog are fully functioning renewable power systems that are ready for an energy-hungry world. What is featured first are Photovoltaic and Windpowered systems that are utility intertied which means that they can co-generate with the power grid, making the power meter run backwards.

The systems can also be "free-standing" which means that they can generate power, beyond the grid, anywhere there is wind or sunshine. This year we are introducing micro-generators and biomass generators which produce their energy from fuels derived from biomass and sustainable waste-treatment alternatives. Please give us a call when you are ready to become energy independent.

Synergy



California Ltd.

P.O. Box 3171 Sausalito, CA 94966

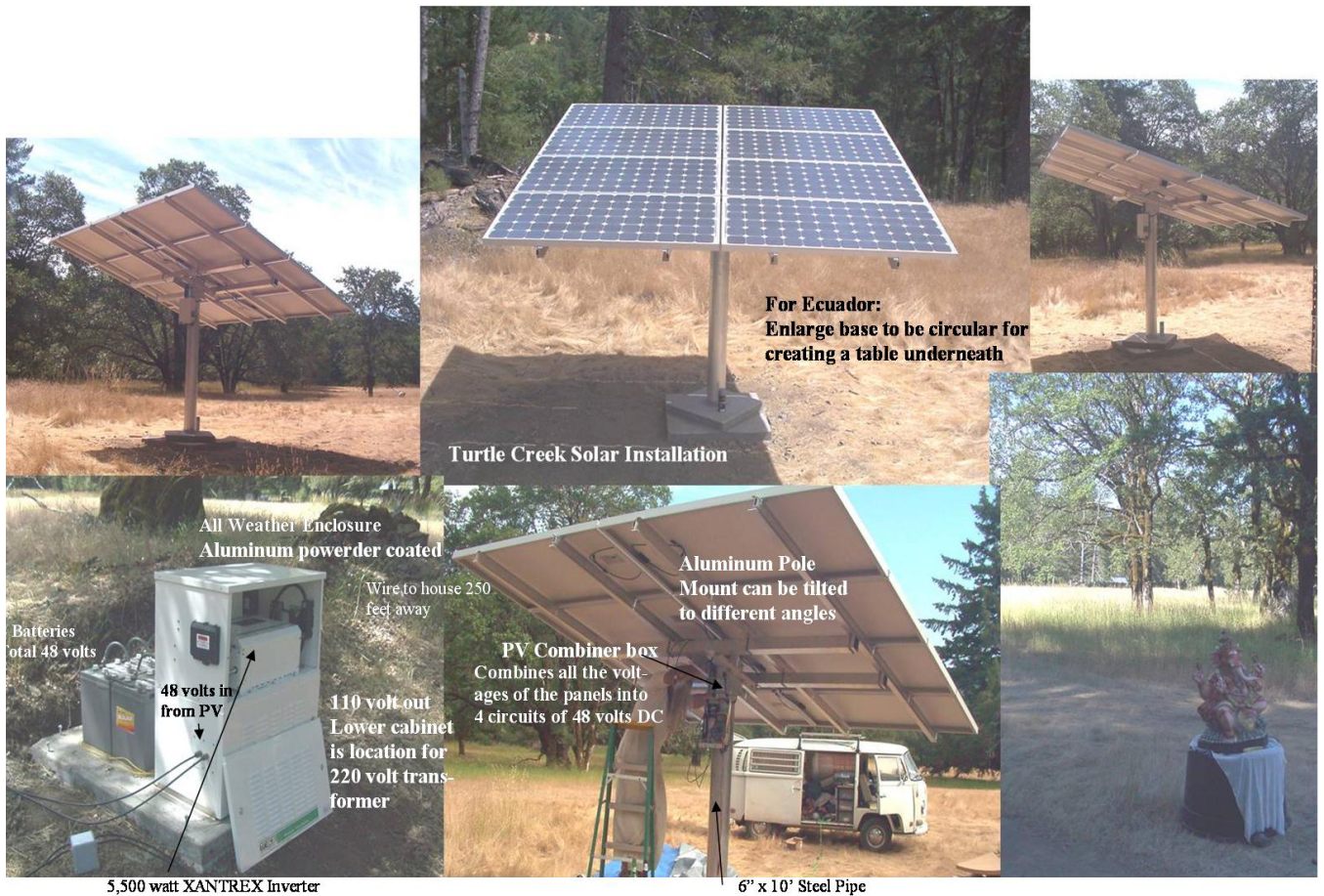
TEL: (415) 290-4990, FAX: (425) 790-0921

SynergySystems® UB Utility-Tie Solar Electric Generators with BATTERY BACKUP

SYNERGY SYSTEM ® UB photovoltaic systems automatically convert free sunshine into standard utility power quietly and reliably. When the power you generate is greater than what your house is using, your electric meter will run backwards and reduce your utility bill! The utility company will credit you for the power at the same rate you pay! (up to break even) Additionally whenever there is a power failure or blackout, the system will immediately and automatically take over powering your selected critical loads using solar and/or energy stored in your battery bank. These systems include all the major components needed for a complete installation. The modules are high performance BP Solar SiN polycrystalline 160 watt with quick-connect (MC) wires, integral bypass diodes and attractive robust dark anodized aluminum frame. The modules are covered by a 25-year output warranty. The flush mounting hardware included is fabricated with stainless steel hardware and anodized aluminum, engineered and designed for rapid, durable installation. Input voltage 48VDC, Output voltage 120VAC. All systems come with a 5 year warranty on the inverter. A 5 year installation warranty also applies from Synergy California Ltd.

Synergy Systems® UB Photovoltaic Power Systems

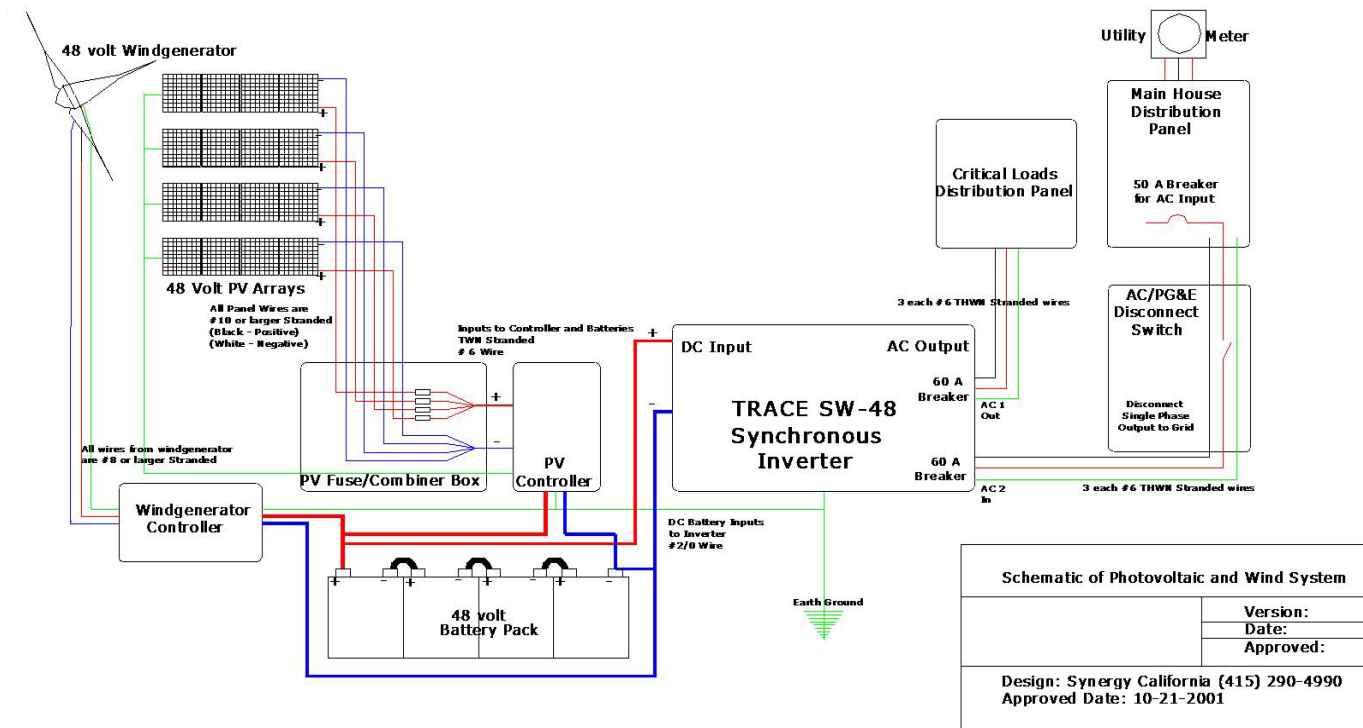
Model Number	UB1100	UB1600	UB2000	UB2400	UB3200	UB4000	UB4800
Order Number	4292-G	4293-E	4294-D	4295-D	4296-D	4297-E	4298-C
PV Peak Power (Watts DC) CEC	1280	1920	2400	2880	3840	4800	5760
Number of Modules (160 watts)	8	12	15	18	24	30	36
PV Area (Sq. Ft.)	115	173	216	260	346	432	518
Annual Output in KWH/Year	2175	2900	3625	4350	5800	7250	8800
KWH/Day (CEC)	5.9	7.9	9.9	11.9	15.9	19.8	24
AC Output Voltage	120	120	120	120	120	120	120
Inverter (watts continuous)	4000	4000	4000	4000	4000	4000	5500
Number of 12 volt batteries	4	4	4	8	8	8	8
Battery Capacity at 80% Depth of Discharge (KWH)	4	4	4	8	8	8	8
List Price (Tax not included)	\$18,229	\$21,597	\$24,962	\$29,020	\$36,518	\$42,985	\$50,198
California Rebate (@ \$2.80/ watt) *	-\$3,338	-\$4,452	-\$5,564	-\$6,678	-\$8,904	-\$11,130	-\$13,496
Actual Cost (After Rebate)	\$14,891	\$17,145	\$19,398	\$22,342	\$27,614	\$31,855	\$36,702
"Average" Design/ Permitting/Installation Cost	\$ 5,000	\$ 5,500	\$ 6,000	\$ 6,500	\$ 7,000	\$ 7,500	\$ 8,000



UB1100 Synergy System with extra large batteries and pole mount for remote power.

4,800 watt Synchronous Inverter and PV Controllers in all weather case





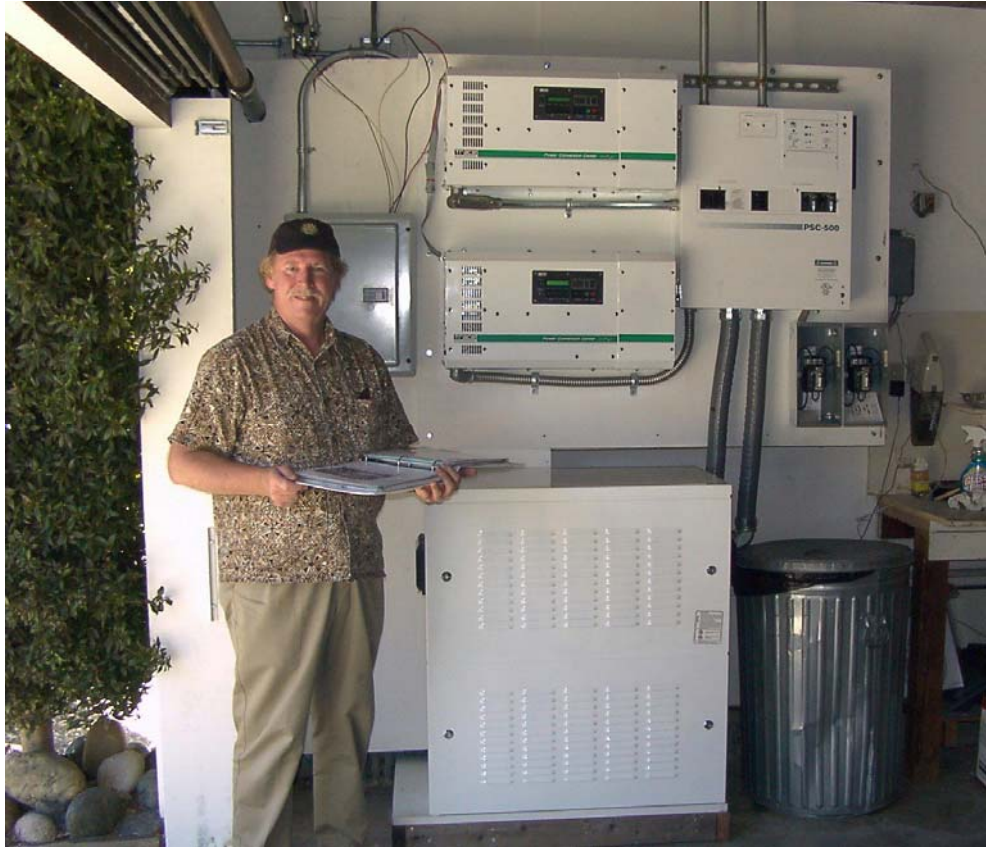
Circuit Diagram for all Utility Battery (UB) Synergy Systems.

These electric power systems can utilize wind generators, photovoltaic panels, hydro turbines, microturbines and back-up generators to charge batteries.

The most common battery voltage is 48 volts which keeps wires from the generators small. The XANTREX-TRACE Synchronous Inverter accepts the 48 volt battery voltage and inverts it to 120 Volt AC. One output from the inverter goes to a critical loads circuit breaker and 110 volt outlets and to power all local loads.

If you are near the power grid it is also possible to create an output to PG&E through a PG&E disconnect switch which is a requirement. Excess power not going to the battery or local load can be sold to the power company. If more power is being generated than what is used the PG&E meter will run backwards.

The diagram above shows a utility intertied system powered by solar and wind energy.



Dual Trace 4048 Synchronous Inverters 220 volt output 10KW Capacity



SOL-GEN™ UT Solar Electric Generators w/ Evergreen Modules and Various Inverters

These Systems put a reverse spin on your electric meter, and they qualify for a \$2.80/watt rebate from the California Energy Commission and a 30% Federal Tax Credit (\$2000 max for residential)

SOL-GEN™ UT systems automatically convert sunshine directly into electricity.

These systems produce clean, cost-effective power, silently, with no moving parts. When the power you generate is greater than what your house is using, your electric meter will run backwards and reduce your utility bill. Current laws require the utility companies to credit you for the power at the same rate you pay! up to break even. These systems include a choice of several high quality inverters and all the major components needed for a complete installation.

The modules are Evergreen Cedar Line String Ribbon 120 watt 12V. These modules come with a 98% guaranteed power output (2% power tolerance) and a 25 year power output warranty. The flush mounting hardware included is fabricated with stainless steel hardware and anodized aluminum, engineered and designed for rapid, durable installation. All switchgear and ground fault protection for the array are included and UL listed. An approved system performance meter is included. It shows the instantaneous power output, as well as daily and cumulative KWH production. In the event of a utility power failure these systems will not operate. If you would like a system that would protect you from blackouts, select one of our SOL-GEN™ UB systems. Feeding power back to the utility grid requires approval from your utility company. Similar systems available for 3-phase 208VAC output. Installation cost will vary depending on the size of the system, type of roof and location.



Sol-Gen UT Systems w/ Evergreen 120 watt Modules and Various Inverters

Model Number	UT1800ES	UT2000ES	UT2200EG	UT2400EG	UT2650EP	UT2700EP
Order Number	719054	719055	719056	719057	719070	719059
PV Peak Power (Watts AC) CEC	1801	2001	2225	2427	2644	2800
No. of Strings, No. per String	1 x 18	1 x 20	1 x 22	1 x 24	1 x 26	2 x 14
PV Array Area Sq. Ft. (Approx)	208	232	255	278	302	325
Annual Output KWH/Year (CEC)*	3254	3615	4020	4385	4777	5059
Average KWH/Day (CEC)*	8.9	9.9	11.0	12.0	13.1	13.9
Inverter Model	SB 2100	SB 2100	GT 2500	GT 2500	GT 2500	PVP 2800
List Price	\$15,565	\$17,083	\$19,045	\$20,961	\$22,874	\$24,564
California Rebate (@\$2.80/Watt)	\$5,043	\$5,603	\$6,230	\$6,796	\$7,403	\$7,840
List Price After Rebate	\$10,522	\$11,480	\$12,815	\$14,165	\$15,471	\$16,724

Model Number	UT3450ES	UT37000EG	UT3800ES	UT4300EP	UT5100ES	UT5800ES
Order Number	719060	100067	719076	719063	719065	719066
PV Peak Power (Watts AC) CEC	3457	3680	3800	4338	5084	5796
No. of Strings, No. per String	2 x 17	2 x 18	2 x 19	2 x 21	2 x 25	3 x 19
PV Array Area Sq. Ft. (Approx)	394	417	440	487	580	660
Annual Output KWH/Year (CEC)*	6246	6649	6866	7838	9186	10472
Average KWH/Day (CEC)*	17.1	18.2	18.8	21.5	25.2	28.7
Inverter Model	SB 3800	GT 3800	SB 3800	PVP 5200	SB 6000	SB 6000
List Price	\$29,583	\$31,066	\$31,605	\$37,291	\$44,591	\$49,558
California Rebate (@\$2.80/Watt)	\$9,680	\$10,304	\$10,640	\$12,146	\$14,235	\$16,229
List Price After Rebate	\$19,903	\$20,762	\$20,965	\$25,145	\$30,356	\$33,329

Suggested retail prices do not include tax, installation or permitting costs. Contractor discounts available.

*Clean Power Estimator Output based on 5.5 ESH Equivalent Sun Hours, south facing at 30 Deg tilt

Rev 4-06

SOL-GEN™ UTILITY-TIED SOLAR ELECTRIC GENERATORS w/ XANTREX GT INVERTERS

These Systems put a reverse spin on your electric meter, and they qualify for a \$2.80/watt rebate from the California Energy Commission and a 30% Federal Tax Credit (\$2000 maximum for Residential)



SOL-GEN™ UT systems automatically convert sunshine directly into electricity. These systems produce clean, cost-effective power, silently, with no moving parts. When the power you generate is greater than what your house is using, your electric meter will run backwards and reduce your utility bill. Current laws require the utility companies to credit you for the power at the same rate you pay! up to break even.

These systems include the Xantrex GT Series inverters and all the major components needed for a complete installation. The modules are high performance BP Solar SiN polycrystalline 170 watt with quick-connect (MC) wires, integral bypass diodes and attractive robust dark anodized aluminum frame. The modules are all covered by a 25-year output warranty. The flush mounting hardware included is fabricated with stainless steel hardware and anodized aluminum, engineered and designed for rapid, durable installation. All switchgear and ground fault protection for the array are included and UL listed. A CEC approved system performance meter is included. It shows the instantaneous power output, as well as daily and cumulative KWH production. In the event of a utility power failure the system will not operate. If you would like a system that would protect you from blackouts, select one of our SOL-GEN™ UB systems. Feeding power back to the utility grid requires net metering agreement with your utility company. Installation cost will vary depending on the size of the system, type of roof and location.

SOL-GEN UT Utility-Tied Solar Electric Generator with Xantrex GT Series Inverters & SX170B Modules										
Model Number	UT1700G	UT2500G	UT2800G	UT3150G	UT3400G	UT3800G	UT5100G	UT5700G	UT6900G	UT7700G
Quote Number	708950	708951	708952	715228	Q100070	Q100071	711249	711250	Q00072	Q00073
PV Peak Power (Watts AC) CEC	1700	2500	2848	3133	3436	3800	5127	5696	5872	7731
# of Strings & # in Each String	1 x 12	2 x 9	2 x 10	2 x 11	2 x 12	3 x 9	4 x 9	4 x 10	4 x 12	6 x 9
PV Array Area Sq. Ft. (Approx)	175	256	285	314	346	390	520	580	700	785
Annual Output KWH (CEC)*	3071	4517	5146	5661	6208	6866	9263	10291	10609	13968
Average Daily KWH (CEC)*	8.4	12.4	14.1	15.5	17.0	18.8	25.4	28.2	29.1	38.3
Inverter Size (watts continuous)	2500	2500	3000	3300	3800	3800	2 x 3000	2 x 3000	2 x 3800	2 x 3800
List Price	\$16,108	\$23,088	\$25,513	\$28,053	\$30,689	\$34,771	\$46,389	\$51,133	\$61,275	\$69,245
California Rebate (@\$2.80/Watt)	\$4,760	\$7,000	\$7,974	\$8,772	\$9,621	\$10,640	\$14,355	\$15,949	\$16,442	\$21,647
List Price After Rebate	\$11,348	\$16,088	\$17,539	\$19,281	\$21,068	\$24,131	\$32,034	\$35,184	\$44,833	\$47,598

Prices are suggested retail and do not include sales tax, installation or permitting. Contractor discounts available.

*Clean Power Estimator Output based on 5.5 ESH Equivalent Sun Hours, south facing at 30 Deg tilt

Rev5-06

SOL-GEN™ UT UTILITY-TIED SOLAR ELECTRIC GENERATORS w/ PV POWERED INVERTERS

These Systems put a reverse spin on your electric meter, and they qualify for a \$2.80/watt rebate from the California Energy Commission and a 30% Federal Tax Credit (\$2000 max for Residential)

SOL-GEN™ UT-PV systems automatically convert sunshine directly into electricity. These systems produce clean, cost-effective power, silently, with no moving parts. When the power you generate is greater than what your house is using, your electric meter will run backwards and reduce your utility bill. Current laws require the utility companies to credit you for the power at the same rate you pay! up to break even. These systems include the PV Powered 2000, 2800XV or the 5200 Inverters and all the major components needed for a complete installation. The inverters have a **10 year warranty**, have a low parts count and are made in the USA. The modules are high performance BP, Evergreen or Mitsubishi with quick-connect (MC) wires, integral bypass diodes and attractive robust aluminum frame. The modules are all covered by a 25-year output warranty. The flush mounting hardware included is fabricated with stainless steel hardware and anodized aluminum, engineered and designed for rapid, durable installation. All switchgear and ground fault protection for the array are included and UL listed.



A CEC approved system performance meter is included. It shows the instantaneous power output, as well as and cumulative KWH production. In the event of a utility power failure the system will not operate. If you would like a system that would protect you from blackouts, select one of our SOL-GEN™ UB systems. Feeding power back to the utility grid requires net metering agreement with your utility company. Similar systems also available for 3-phase 208VAC output. Installation cost will vary depending on the size of the system, type of roof and location.

SOL-GEN UT Utility-Tied Solar Electric Generator with PV Powered Inverters and BP SX170B									
Model Number	UT2000PV	UT2600PV	UT2800PV	UT3900P5	UT4300P5	UT5200P5	UT5600PV	UT8000PV	UT10400PV
Quote Number	714694	710921	710922	715941	714691	714692	710924	715942	715957
PV Peak Power (Watts AC) CEC	1962	2563	2800	3906	4340	5200	5600	8000	10400
# of Strings & # in Series	2 X 7	2 X 9	2 x 10	3 x 9	3 x 10	4 x 9	4 x 10	2 x 10 / 4 x 9	8 x 9
PV Array Area Sq. Ft. (Approx)	202	260	290	392	435	520	578	810	1040
Annual Output KWH/Year (CEC)*	3742	4888	5340	7449	8277	9917	10680	15257	19834
Average KWH/Day (CEC)*	10.3	13.4	14.6	20.4	22.7	27.2	29.3	41.8	54.3
Inverter Size (watts continuous)	PVP2000	PVP2800XV	PVP2800XV	PVP5200	PVP5200	PVP5200	2 x 2800XV	2800XV & 5200	2 x PVP5200
List Price	\$19,026	\$23,437	\$25,655	\$36,077	\$39,446	\$46,105	\$51,397	\$71,895	\$92,559
California Rebate (@\$2.80/Watt)	\$5,494	\$7,176	\$7,840	\$10,937	\$12,152	\$14,560	\$15,680	\$22,400	\$29,120
List Price After Rebate	\$13,532	\$16,261	\$17,815	\$25,140	\$27,294	\$31,545	\$35,717	\$49,495	\$63,439

Prices are suggested retail prices and do not include sales tax, installation or permitting costs. Contractor discounts available.

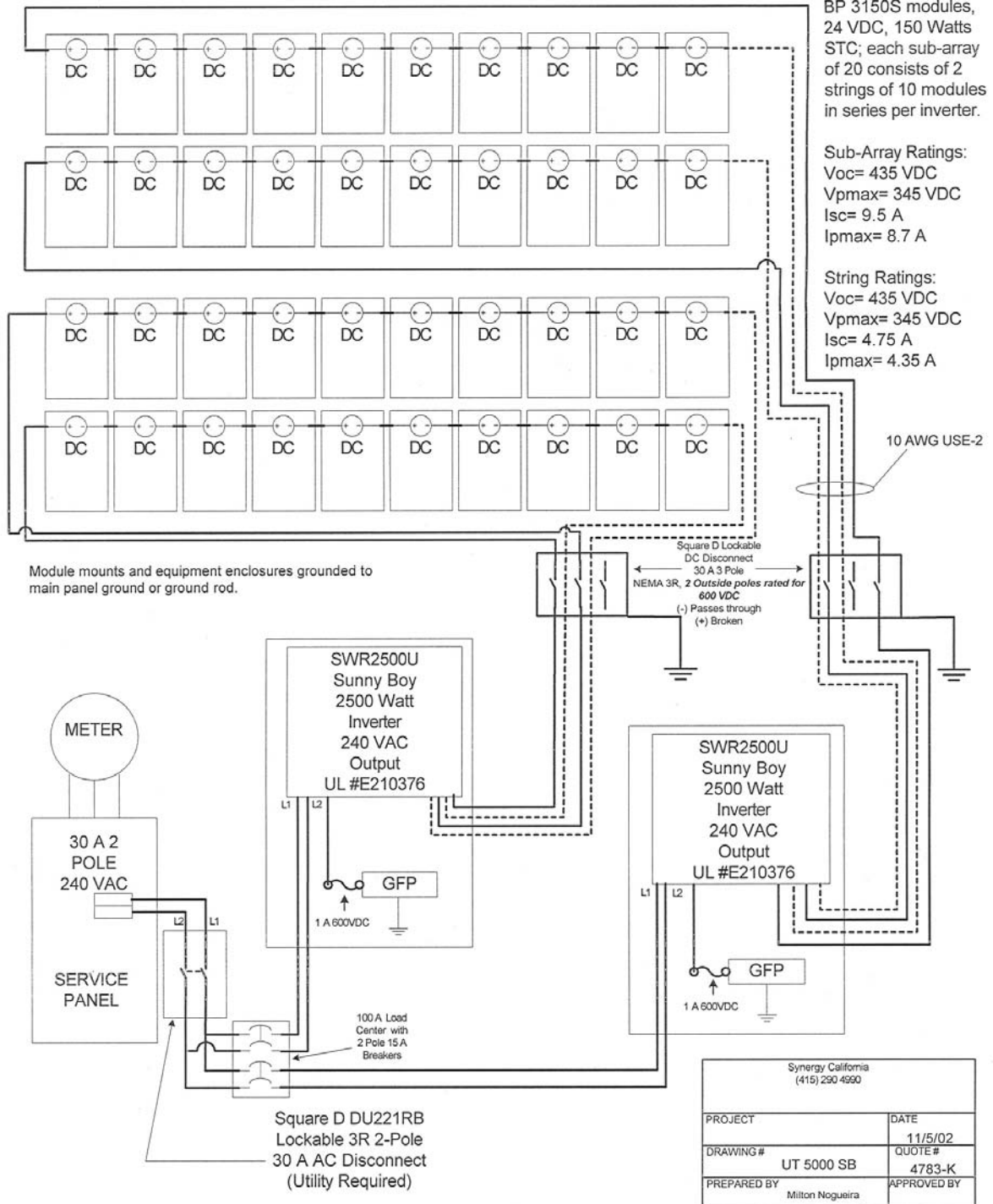
*Clean Power Estimator Output based on 5.5 ESH Equivalent Sun Hours, south facing at 30 Deg tilt

Rev 05-06

SOL-GEN UT Solar Electric Generators with PV Powered Inverters & Evergreen or Mitsubishi						
Model Number	UT2400PM	UT2600PM	UT2700EP	UT4000P5M	UT4400EP	UT5200P5M
Quote Number	716234	716235	715832	716241	715833	716243
PV Peak Power (Watts AC) CEC	2361	2623	2728	3997	4375	5197
Module Make/Model	Mit 155	Mit 155	EC 115	Mit 155	EC 115	Mit 155
# of Strings & # in Series	2 x 9	2 x 10	2 x 14	2 x 15	2 x 22	3 x 13
PV Array Area Sq. Ft. (Approx)	245	273	325	410	510	532
Annual Output KWH/Year (CEC)*	4266	4739	4929	7222	7905	9389
Average KWH/Day (CEC)*	11.7	13.0	13.5	19.8	21.7	25.7
Inverter Size (watts continuous)	PVP2800XV	PVP2800XV	PVP2800XV	PVP5200	PVP 5200	PVP5200
List Price	\$20,478	\$22,381	\$23,378	\$34,236	\$34,890	\$43,446
California Rebate (@\$2.80/Watt)	\$6,611	\$7,344	\$7,638	\$11,192	\$12,250	\$14,551
List Price After Rebate	\$13,867	\$15,037	\$15,740	\$23,044	\$22,640	\$28,895

Rev 01-06

UT 5000 SB 5000 watts CEC





Sunnyboy UT 1100SB PV Installation directly to the Grid.



PV Installation utilizing the Grid-Beam Spaceframe for uneven roof surfaces.

SYNERGY® Power Stations



For continuous loads of 100 to 3500 watts, 12, 24 or 48 volts DC and/or utility-grade AC voltage. Power Stations offer technically advanced power generation solutions for off-grid, remote power.

Features and benefits

- Solar modules are fully encapsulated to resist harsh weather conditions**
- Stand-alone or hybrid systems**
- Self-supporting, ballasted design requires no foundation**
- NEC code compliant over-current protection and safety disconnect**
- Adjustable array maximizes power output**
- Corrosion resistant control/battery enclosure**
- Installation, operation & maintenance documentation**
- Pre-assembled and factory tested for easy installation**
- Clean, renewable energy provides low environmental impact**
- Factory testing for quality assurance**
- Low maintenance and operating costs**
- Complete systems reduce specifying and buying time**
- Quality components assure long system life**
- Reliable, continuous power**

SYNERGY® Power Stations

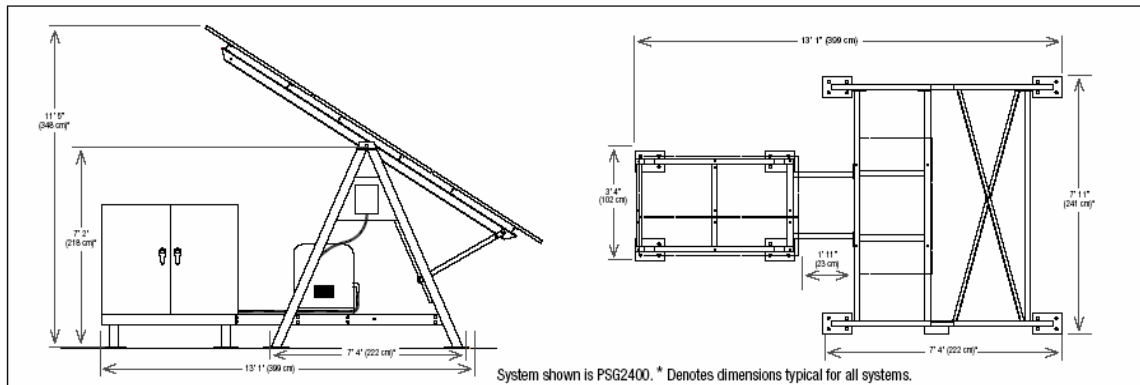
Synergy Power Stations are complete, integrated power supplies designed for site loads requiring 12, 24 or 48 volts DC and/or utility-grade AC voltage. Wired to U.S. National Electrical Code standards, each solar electric system provides safe and reliable power generation without the expense of installing utility power. The solar array tilt is easily adjustable to maximize solar energy output. The systems are mounted on weatherproof steel structures or trailers engineered to withstand harsh environments and high wind loads. With a wide variety of options available, you can customize the Power Station to meet your power requirements.

Shipping and Handling - Power Stations are fully assembled for factory testing before shipment and then partially disassembled for shipping depending upon customer requirements. For easy assembly in the field, the battery box and pre-wired control box are shipped together.

Warranty - Synergy Power Stations carry a one-year system warranty for materials and workmanship. The solar modules have a 25-year warranty. Careful component selection results in a system with a lifetime exceeding 25 years with battery replacements every five to ten years.



This 2400W Power Station is used to power a Microwave Repeater Site.



Model Description	Array Wp	Stand-Alone or Hybrid	Weight	Synergy Part Number	List Price
Hybrid Power Station - 900	900	Hybrid with Generator	2,900	SPSG900	\$ 30,000
Hybrid Power Station -1200	1200	Hybrid with Generator	3,000	SPSG1200	\$ 32,000
Hybrid Power Station -1500	1500	Hybrid with Generator	3,100	SPSG1500	\$ 34,000
Hybrid Power Station -1800	1800	Hybrid with Generator	3,200	SPSG1800	\$ 37,000
Hybrid Power Station -1800	2400	Hybrid with Generator	3,400	SPSG2400	\$ 39,000
PV Power Trailer- 400	400	Stand Alone Trailer		SPT400	\$ 10,000
PV Power Trailer- 680	680	Stand Alone Trailer		SPT680	\$ 14,000
PV Power Station - 900	900	Stand Alone	2,200	SPS900	\$ 21,000
PV Power Station - 1200	1200	Stand Alone	2,800	SPS1200	\$ 23,000
PV Power Station - 1500	1500	Stand Alone	2,900	SPS1500	\$ 25,000
PV Power Station - 1800	1800	Stand Alone	3,000	SPS1800	\$ 29,000
PV Power Station - 2400	2400	Stand Alone	3,200	SPS2400	\$ 32,000

Mobile SYNERGY® Power Stations



Power Trailer SPT SPT680

Featuring:

- 4 170 watt PV Panels
- 4 OPTIMA100 amp hr batteries
- 1 XANTREX 4,500 watt Sine Wave Synchronous Inverter.
- 1 XANTREX 220 VAC transformer
- 1 TRACE 40 amp charge controller.
- Integrated DC and AC circuit breakers
- All weather powder-coated enclosures.
- Integrated PV Panel Mount and Trailer
- Back-up Generator optional.

List Price: \$14,000



SOLMAN Mobile Power system

Featuring:

- One 75 watt foldable PV panel (there is room for 3)
- 2 OPTIMA 75 amp-hr sealed batteries.
- 1 Morningstar PV charge controller.
- Integrated circuit breakers.
- External 12 VDC and 120 VAC sealed outlets.
- All-weather enclosure on wheels.
- e-bike shown is powered by Solman but is extra in cost.
- Inverters are optional.

List Price with inverter: \$2,500



eSOLAR Personal Power Carte

Featuring

- Comes with 2 150 watt PV panels and mounting rack, to be mounted on roof.
- 2 OPTIMA100 amp-hr sealed batteries.
- 1 2,000 watt sine wave Inverter/Charger
- 1 Morningstar digital PV controller.
- Integrated Circuit Breakers.
- External 12 VDC and 120 VAC outlets.
- Can plug into Grid for charging.
- Made with GRIDBEAM aluminum spaceframe.
- An Uninterruptable Power Supply with built-in transfer switch should grid power go down.

List Price: \$ 5,000

Blue-Link Power Stations:

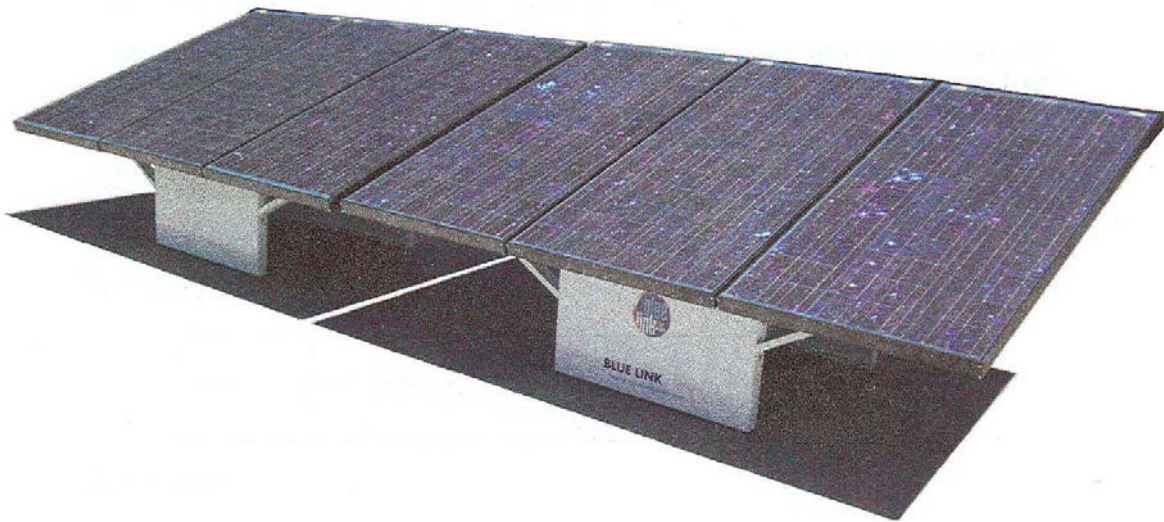


BLUE-LINK 480 (480 watts)

Featuring:

3 BP 160 watt PV panels.
Integrated mounting structure.
High voltage DC disconnect.
SUNBOY utility intertie inverter.
Utility Disconnect switch.
External wireless metering.

List Price: \$5,000



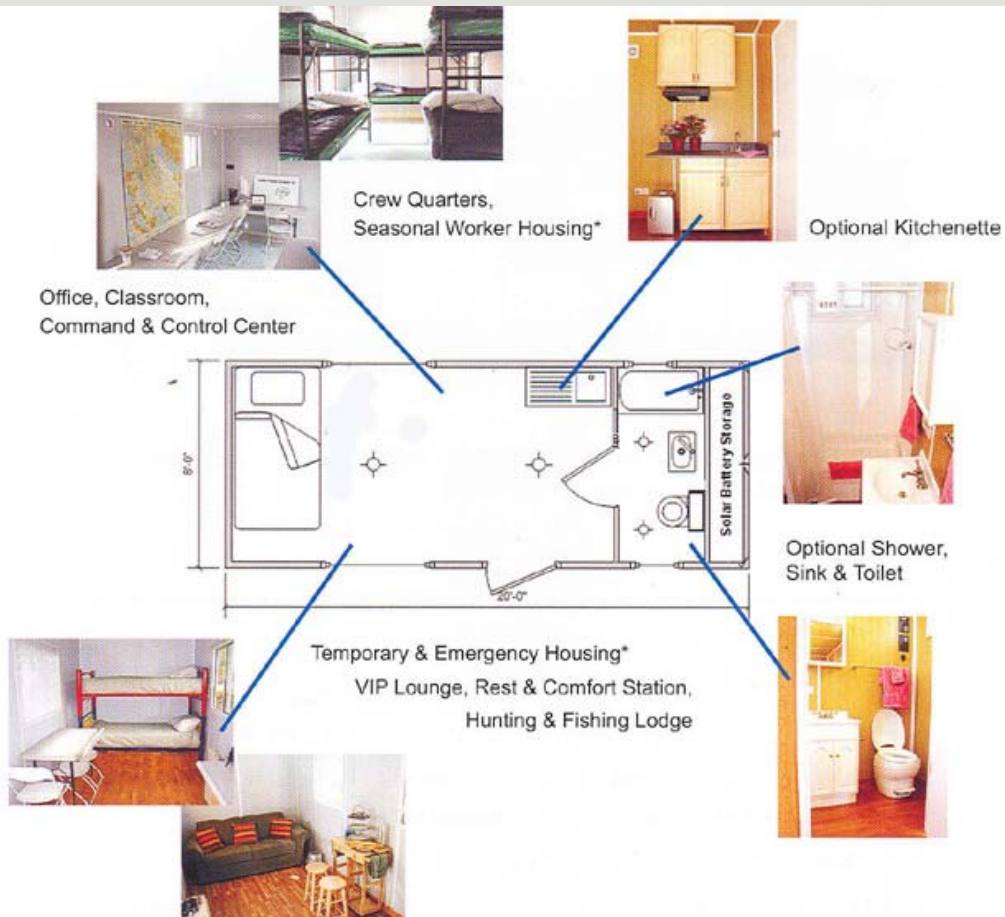
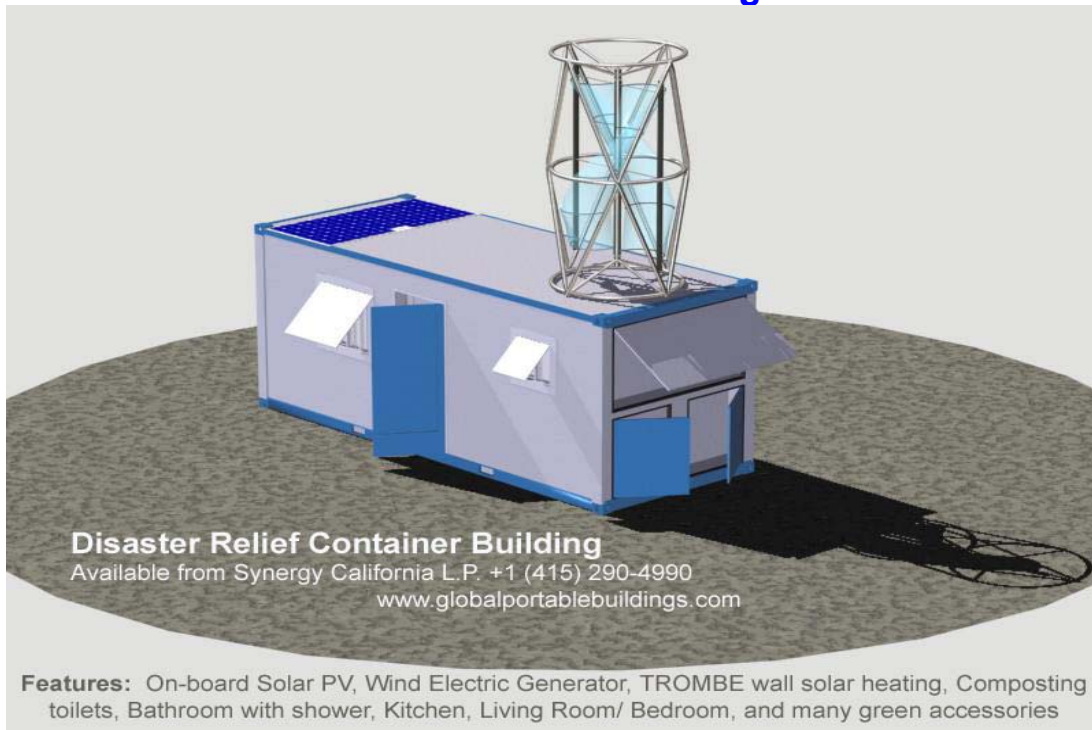
BLUE-LINK 960 (960 watts of output)

Featuring:

6 BP 160 watt PV panels
Integrated mounting structure.
High voltage DC disconnect.
SUNBOY utility intertie inverter.
Utility Disconnect switch.
External wireless metering.

List Price: \$9,000

Global Portable Buildings





PRICE LIST & SPECIFICATIONS ISO Shipping Container/Buildings New 8' wide x 20' long x 8'6" high



Basic Corten Steel 8' x 20' ISO Unit **with MGSS stainless steel siding**

The basic unit includes AC voltage electrical system (breaker panel, light fixtures, wall receptacles, telephone lines, and other wiring, etc.) windows, entrance door, and two inches of rigid foam insulated finished walls/ceiling, vinyl floor covering, and external utility room.

Options for the 20' Unit.

Bathroom:

includes bathroom wall with sliding pocket door, toilet, shower, sink, cabinet, plumbing, etc., (hot water heater not included).

Kitchen:

includes 6' counter top, sink with faucets, cabinets above and below counter, plumbing, etc.

Solar Electric System:

Includes 150 watt Polycrystalline silicon solar panel, charge controller, three 12 volt DC light fixtures, circuit breaker, 12 volt DC adaptor plug, 4 12 volt (100 amp hour) maintenance free batteries, One 1,000 watt 120 volt sine-wave inverter.

	MATERIALS
	\$9,325
\$1,025	<u>\$1,025</u>
Total	\$10,350
	\$2,425
	\$ 3,587
TOTAL	\$16,362

Notes:

- The basic 20' (without bathroom and kitchen) can sleep 8 persons if double bunk beds are used.
- All prices are FOB Shanghai, China.
- All units are new and are ISO Specified. All units are shipped on standard container ships. Typical shipping cost: Shanghai to New Orleans: \$1,500
- A wind-power generator system option is also available.
- For remote dwellings other options include pressurized water, compost toilets, gas demand hot water and stoves. Contact us for pricing of these and other appliances.
- Quantity Discounts on base units and options.

50 Units = 5%
*100 Units = 10%
500 Units = 15%
1000 Units = 20%

*GPB is giving the 1000 unit discount (20%) on orders of 100 units. GPB feels that clients ordering 100 units will be ordering more and will reach the 1000 unit price discount.

Source of Quote: Reinhold Ziegler, Global Portable Buildings and Synergy California L.P. (415) 290-4990, synergycal@earthlink.net, www.synergycal.com





20' ISO Container House.

Contact: **Synergy California L.P.**

www.synergyl.com

synergyl@earthlink.net (415) 290 4990

